



PS No.	PS-902-2023-001
Version	00
Date	2023/11/10

继电器规格书

RELAY SPECIFICATION

客户名称/Customer:

客户品名/Your Product Description

客户零件编号/Your Part Number:

旺荣品名/Our Product Description: SRE-2E

旺荣零件编号/Our Part Number:

客户批准/Customer Approval

盖章处/STAMPING AREA

发行批准 / Issued by

编制 Make	审核 Check	安规会签 Countersign	批准 Approve

1. 技术参数/Technical Parameters

1.1	额定负载电流/ 电压 Rated load current / voltage	10A 300VAC 10A 300VAC
1.2	介质耐压 Dielectric Strength	2500 VAC/分钟(同极接点间) 2500 VAC@50/60Hz 1 s.(Between Open Contacts) 4000 VAC/分钟(线圈/接点间) 4000 VAC@50/60Hz 1 s.(Between Coil and Contacts)
1.3	使用环境温度 Ambient Temperature (Operation)	-40~85 ℃ (无凝结时) -40~85 ℃ @no condensation
1.4	使用环境湿度 Humidity	95% RH 以下 (无凝结时) 95% RH Max. @no condensation
1.5	螺丝扭矩 Tighting Torque	1.0 牛米 1.0 Nm
1.6	外接导线 Wire Connection	20-14/0.5-2.5 AWG/mm2 20-14/0.5-2.5 AWG/mm2
1.7	重量约 Weight About	34 克 34 g
1.8	阻燃要求 Flame Retardant Requirement	UL94 V-1 UL94 V-1

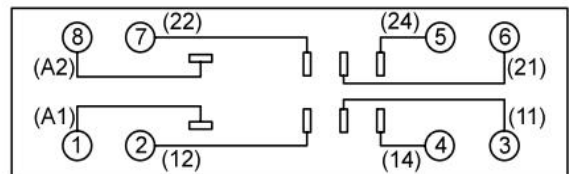
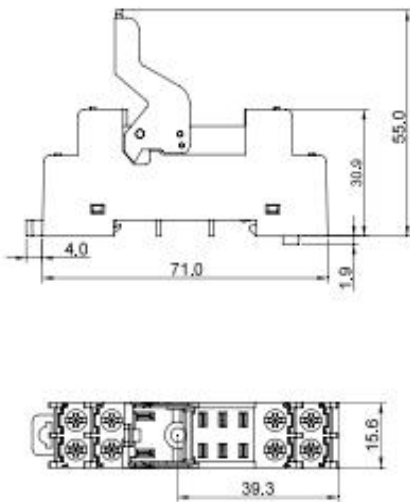
2. 环保要求/Environmental Requirements

2.1 产品符合ROHS和REACH要求。
The product meets the requirements of ROHS & REACH.

3. 外形尺寸/Overall Dimensions

安装配合尺寸/Diagram

端子排布图 (底视图)



未注公差±0.2 mm

Relay Specification

Type

SRE-2E

Part Number

PS No.:

PS-902-2023-001

Ver

00

4. 实物示意/图Product Photo Show



5.

1. 插座表面清洁、无裂纹、起泡和机械损伤。

1. The socket surface shall be clean and free from cracks, bubbling and mechanical damage.

2. 涂覆无起层、脱落锈蚀等现象。

2. The coating has no rising layer, peeling rust and other phenomena.

3. 标志正确清晰。

3. Correct and clear logo.

4. 产品外形尺寸符合外形图。

4. The dimensions of the product conform to the Overall Dimensions

注/Remark

以中文版为准，英文版仅供参考。

Chinese version is the standard one, English version is only for information.

结束/<END>